



ADDENDUM NO. 1

February 20, 2025

To all prospective bidders on the Work titled:

MWFPF Emergency Generator and ATS Replacement (Specification No. 24-471).

The Drawings and Project Manual including Specifications are modified as follows. This Addendum forms a part of the Contract Documents and modifies the original documents dated January 29, 2025.

Acknowledge receipt of this Addendum in the space provided in the Bid Schedule. Failure to do so may subject the Bidder to disqualification.

This Addendum consists of 2 pages and 1 attachment.

AD1-1 Drawing D-01, Sheet 4, Replace Sheet Keynote 1 with the following:

1. TEMPORARY GENERATOR INSTALLATION NOTES:

- 1.1. RELOCATE EXISTING GENERATOR AS TEMPORARY DIESEL GENERATOR, 350 KW, 480/277 V, 3-PHASE.
- 1.2. DISCONNECT FUEL TANK AND DISPOSE OF FUEL AND TANK IN A LEGAL MANNER.
- 1.3. LOTO 800 AMP CIRCUIT BREAKER FROM MAIN SERVICE "MSA" FEEDING (E) ATS.
- 1.4. CONNECT TEMPORARY GENERATOR TO (E) ATS WITH TEMPORARY CABLES, P-02.
- 1.5. SEE SHEET E-03 FOR SINGLE-LINE DIAGRAM.
- 1.6. DO NOT EXCEED 8-HOUR SHUTDOWN TO RELOCATE AND RECONNECT.

AD1-2 Sheet 10, Drawing E-02, Change '(E) LP2' to '(E) LP1'.

AD1-3 Appendix B – Cut Sheets for Diesel Generator (Owner Furnished/Contractor Installed) and Cut Sheets for Automatic Transfer Switch (Owner Furnished/Contractor Installed):

- Replace pages 239-258 with the attached.

Questions and Answers

1. Question: In the scope of work for the new generator, it calls for installing a 100 amp sub panel inside the enclosure. If you can inform us of where the power for the sub panel is coming from (which panel) and the means of getting it to the new generator (underground or surface mount)

Answer: The sub panel is already installed in the new generator. As shown on Sheet 10, Drawing E-02, the generator sub panel will be fed from (E) LP-1 by conduit No. P-05 in the existing building. The conduit from (E) LP-1 will be above ground inside the existing building, extend up the interior wall, penetrate the wall at ground level adjacent to the new ATS, then go underground (alongside P-01) to the generator.

2. Question. What is the final determination by the District of how to mount the existing generator for use as a temporary backup power source? Is this up to the contractor? Will the District provide a trailer to mount the generator onto for future use by District (if so, any direction on how to anchor the generator to the trailer?)

Answer: Contractor will relocate generator and District will mount generator.

- 3. Question. Is there a 28-day strength test requirement of the concrete generator foundation? Does the concrete pad supporting the ATS require 28-day strength test? Is contractor responsible for saving test columns on pour day, coordinating with third-party consultant, and providing strength test results from a lab? Are concrete additives acceptable to achieve 28-day strength faster?

Answer: As shown in Part E – Technical Specifications, 03 30 00 Cast-In-Place Concrete 1.4 QUALITY ASSURANCE Paragraph B: Casitas to provide concrete testing services. Contractor to provide samples as requested.

As shown on Drawing S-01, Sheet 7, a 28-day strength test is required. This shall apply to the new generator pad only.

It is acceptable to use concrete additive to achieve 28-day strength faster, subject to submittal approval.

- 4. Question: Does the Quinn generator package provided by the District include startup with load bank or does contractor need to supply startup by Quinn and/or load bank?

Answer: The Generator Start-up Field test and 2-hour Load Bank test is included in the scope of Owner-Furnished Contractor-Installed equipment. The Pre-Startup Checklist on pages 87 and 88 of the Generator Submittal Package must be completed prior to Quinn Power Technician coming onsite to perform startup and commissioning the system.

- 5. Question: What is the timeline on generator delivery by Quinn? Is generator ready to be delivered, scheduled to be delivered, secured and awaiting delivery date, or yet to be ordered/still in production?

Answer: Quinn has informed Casitas the generator and ATS should be ready to ship to the site in early May 2025. Casitas will keep the Contractor updated and informed should anything change.

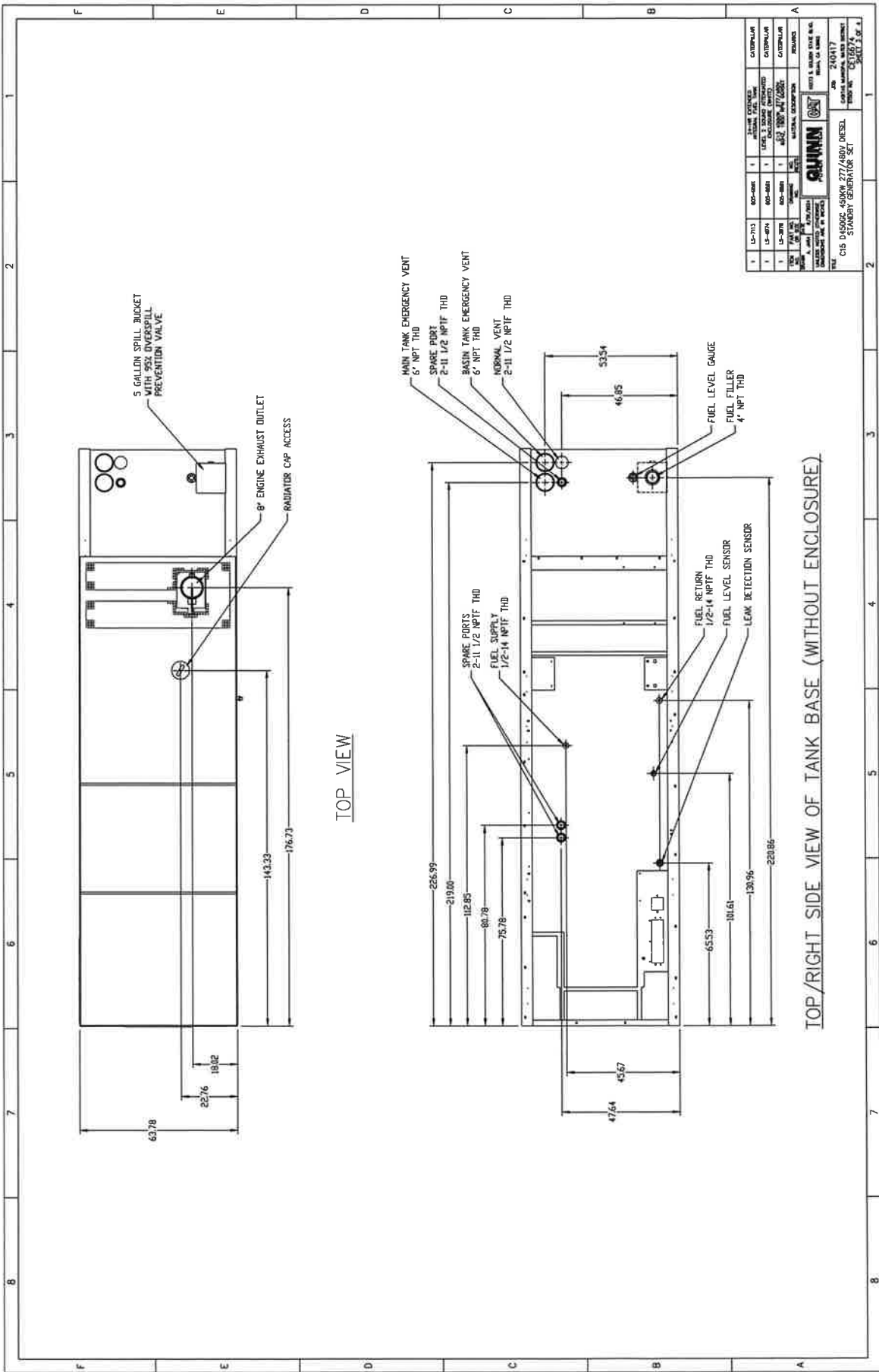
Acknowledgement:

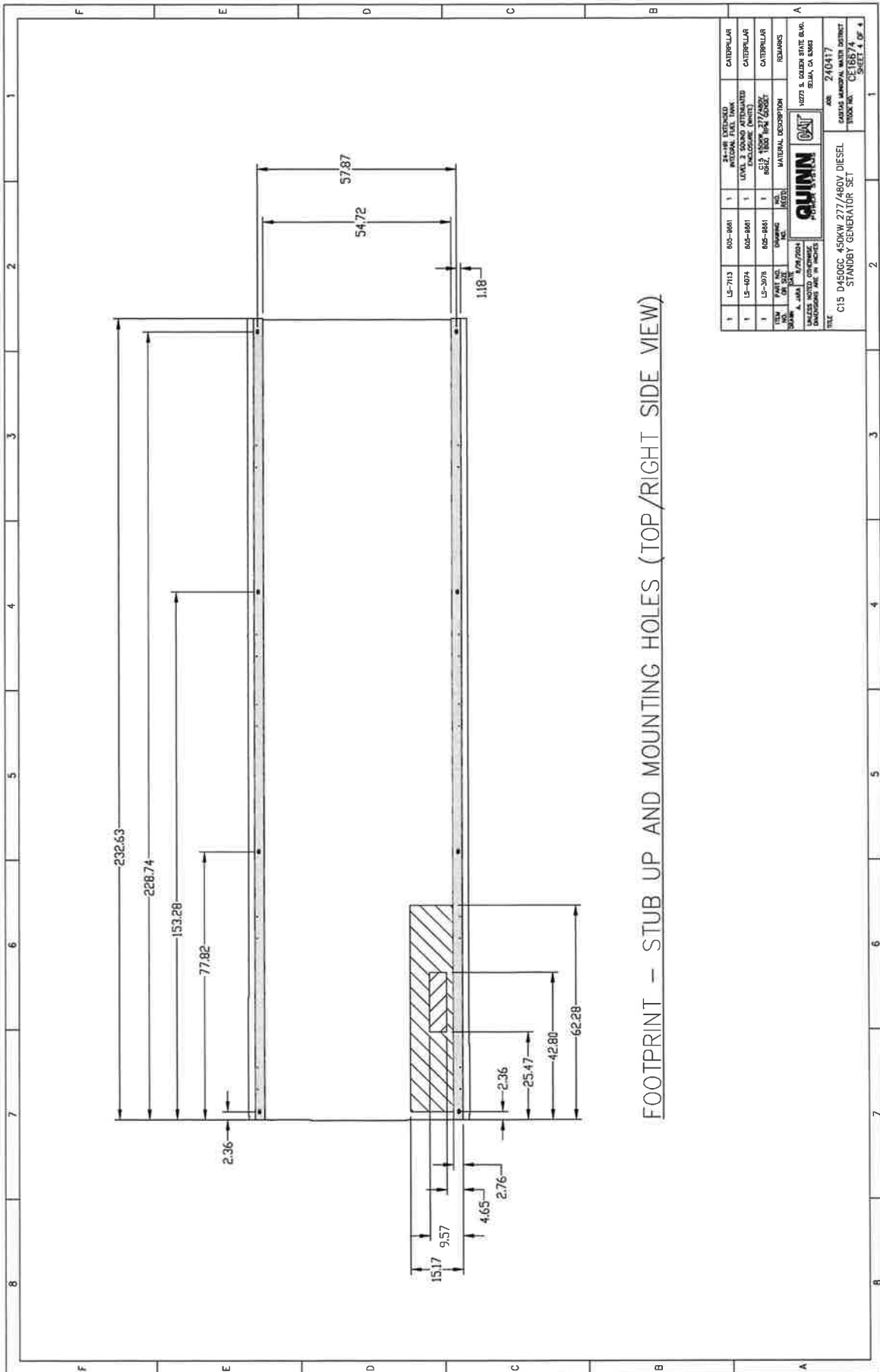
By signature below, Bidder acknowledges Addendum No. 1.

Signed: _____

END OF ADDENDUM NO. 1

Attachment: Appendix B – Cut Sheets for Diesel Generator (Owner Furnished/Contractor Installed) and Cut Sheets for Automatic Transfer Switch (Owner Furnished/Contractor Installed), pages 239-258

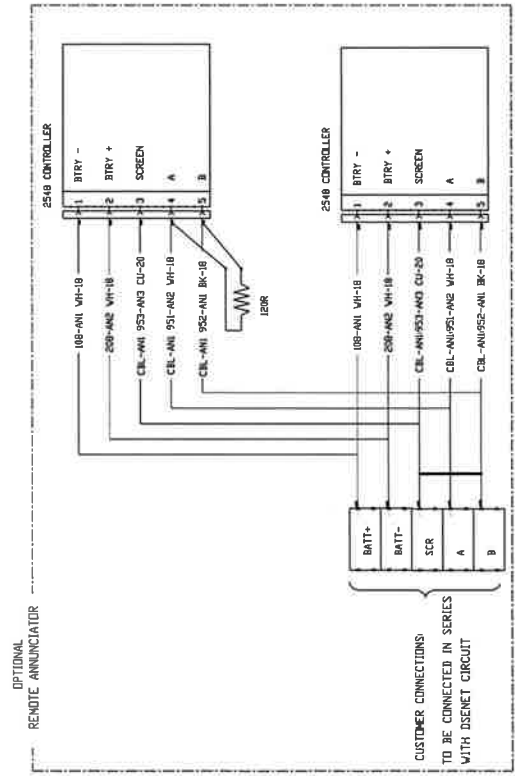
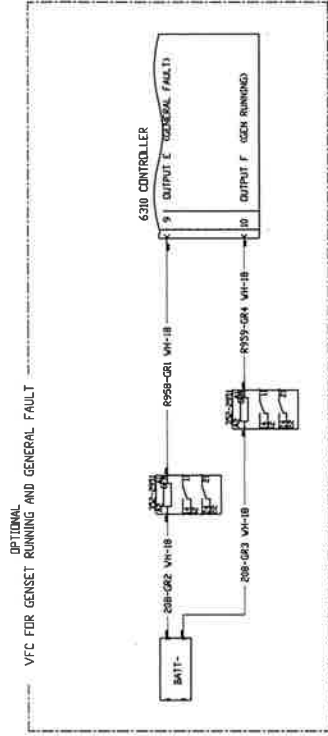
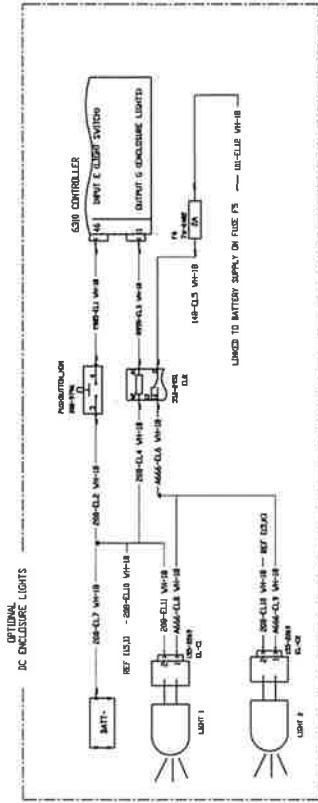




FOOTPRINT -- STUB UP AND MOUNTING HOLES (TOP/RIGHT SIDE VIEW)

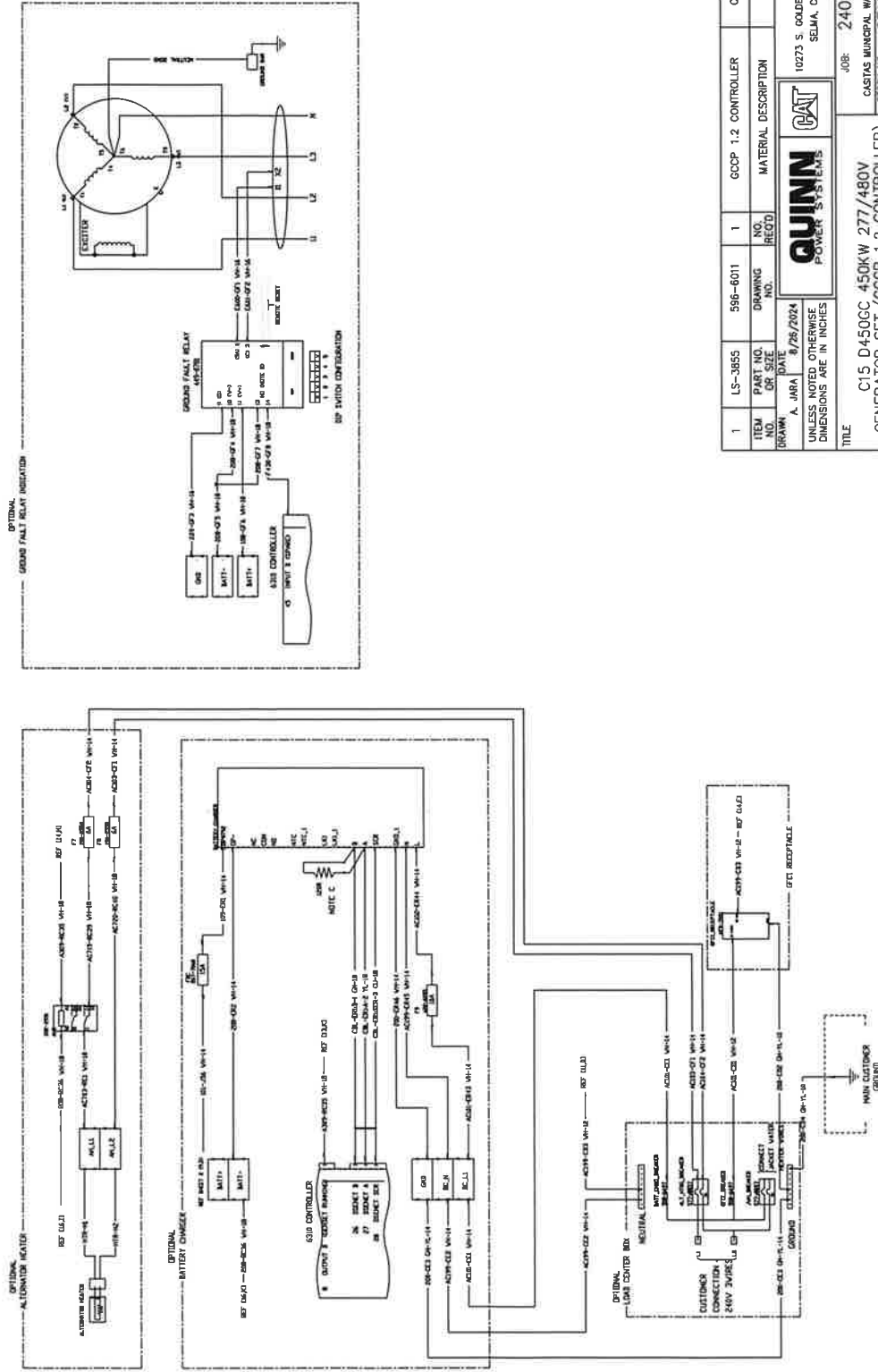
1	LS-7113	600-8861	1	24-PIECE OVERWELD INTERNAL FUEL TANK	CATERPILLAR
1	LS-4074	602-8861	1	LUMBER, 2" SQUARE ATTENUATED	CATERPILLAR
1	LS-3078	602-8861	1	C15 450KW 277/480V 60HZ 1800 RPM 5000L	CATERPILLAR
DATE		BY	CHKD	DATE	REVISION
2007.04.11		JAN	08/2004	04/11/07	1
PROJECT		DESCRIPTION		REMARKS	
10779 S. GARDEN STATE BLVD. SUITE 100		STANDBY GENERATOR SET		10779 S. GARDEN STATE BLVD. SUITE 100	
SCALE		TITLE		JOB NO.	
1"=1'-0"		C15 4500CC 450KW 277/480V DIESEL STANDBY GENERATOR SET		240417	
DRAWN BY		CHECKED BY		DATE	
JAN		JAN		04/11/07	
1000' X 1000'		DET/BB/74		SHEET 1 OF 4	

ADDITIONAL OPTIONS



ITEM NO.	LS-3955	596-6011	1	GCCP 1.2 CONTROLLER	CATERPILLAR
PART NO.	596-6011				
DRAWING NO.					
REV.					
DATE	8/26/2024				
DESIGNED BY	A. JARA				
CHECKED BY					
UNLESS NOTED OTHERWISE DIMENSIONS ARE IN INCHES					
10273 S. GOLDEN STATE BLVD. SELMA, CA 95862					
TITLE: C15 D450CC 450KW 277/480V GENERATOR SET (GCCP 1.2 CONTROLLER)					
JOB: 240417					
CASITAS MUNICIPAL WATER DISTRICT					
STOCK NO. CE16674					
SHEET 4 OF 6					

ADDITIONAL OPTIONS (CONT.)

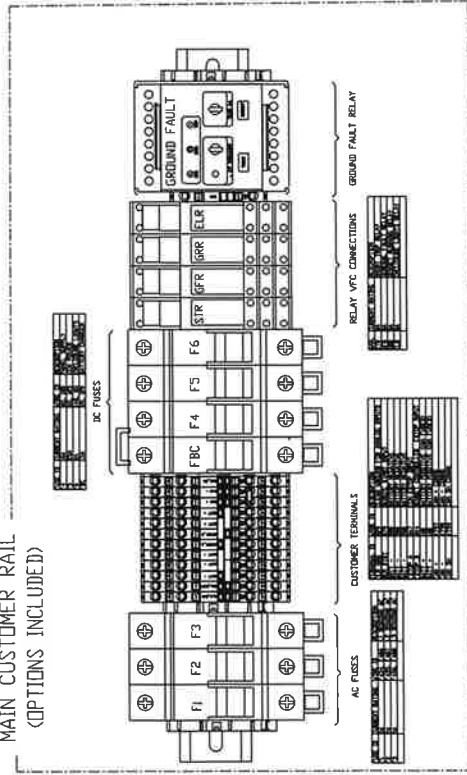


ITEM NO.	PART NO. OR DRAWING NO.	NO. REQ'D	MATERIAL DESCRIPTION	CATERPILLAR	REMARKS
1	LS-3855	586-6011	1	GCCP 1.2 CONTROLLER	

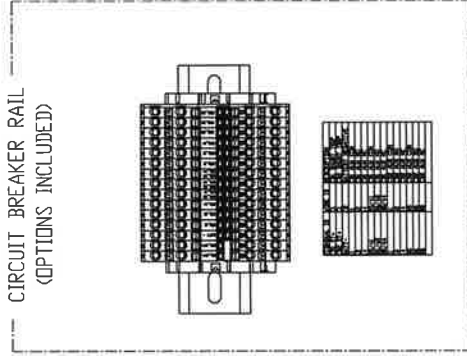
QUINN POWER SYSTEMS		10273 S. GOLDEN STATE BLVD. SELMA, CA 95862	
UNLESS NOTED OTHERWISE DIMENSIONS ARE IN INCHES		JOB NO: 240417	
TITLE C15 D450GC 450KW 277/480V GENERATOR SET (GCCP 1.2 CONTROLLER)		CASTAS MUNICIPAL WATER DISTRICT STOCK NO: CE16674 SHEET 5 OF 6	

ADDITIONAL INFORMATION - COMPONENT DETAILS & CUSTOMER CONNECTIONS

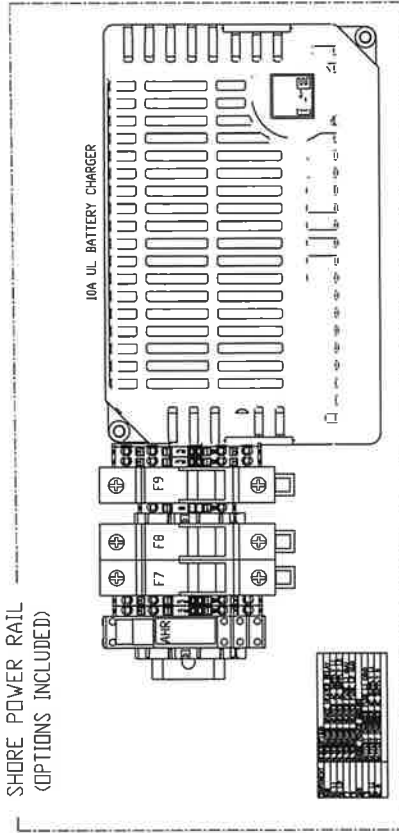
MAIN CUSTOMER RAIL
(OPTIONS INCLUDED)



CIRCUIT BREAKER RAIL
(OPTIONS INCLUDED)



SHORE POWER RAIL
(OPTIONS INCLUDED)



1	LS-3855	596-6011	1	GCCP 1.2 CONTROLLER	CATERPILLAR
ITEM NO.	PLANT NO.	DRAWING NO.	NO. REV'D	MATERIAL DESCRIPTION	REMARKS
DRAWN	DATE				
A. JARA 8/26/2024 UNLESS NOTED OTHERWISE DIMENSIONS ARE IN INCHES					
TITLE: C15 D450GC 450KW 277/480V GENERATOR SET (GCCP 1.2 CONTROLLER)					
JOB: 240417 10273 S. GOLDEN STATE BLVD. SELMA, CA 95862 STOCK NO. CE16674 SHEET 6 OF 6					



Casitas

TRANSFER SWITCH SUBMITTAL

REVISION 00

Cindy Poore

ASCO Power Technologies

1660 Scenic Ave

Costa Mesa, CA 92626

714 267 4921

Cindy.Poore@ASCOPower.com

September 17, 2024

www.ascopower.com | customer@ascopower.com
800-800-ASCO | 160 Park Avenue, Florham Park NJ 07932

Reference Quote: K4-24-661029-1-2
Sales Order: 3307522

TRANSFER SWITCH DETAILS									
ATS NAME	QTY	AMPS / POLES (VOLTS)	BYPASS	TRANSITION TYPE	CATALOG NUMBER	ACCESSORIES	OUTLINE DRAWING	WIRING DIAGRAM	BOM NUMBER
	1	0800 / 3 (480V)	N/A	OPEN	HCGATS30800NGMM	11BE-18FX31Z44G.125A	1001394-009	1001657	1586772

Transfer Switch Withstand and Clipping Ratings																
300, 400 & 700 Series																
ATS WIRE SIZE	FRAME SIZE	SWITCH RATING AMPS		CURRENT LIMITING FUSES			SPECIFIC BREAKER			TIME BASED		Short Time Ratings ¹ (sec)				
		Transfer Switches	Bypass Switches	480V Max.	600V Max.	MAX SIZE-A	CLASS	240V Max.	480V Max.	600V Max.	Time (Sec)	240V Max.	480V Max.	600V Max.	480V Max.	600V Max.
-	H	800-1200	800-1200	200A	200A	100T	L	65A	150A	65A	0.05	50A	50A	50A	35A	-

NOTES:

- 1) All WCR values indicated are tested in accordance with the requirements of UL 1008, 7th Edition.
- 2) Application requirements may permit higher WCR for certain switch sizes.
- 3) Short Time ratings are provided for applications involving circuit breakers that utilize trip delay settings for system selective coordination
- 4) Max fuse rating is 1200A on front connected H frame switches
- 5) The Withstand Rating at 480V is 50kA when coordinated with any breaker capable of clearing a fault current in 0.05 sec or less (time-based rating), 65kA when coordinated with specific breakers (Series Rating) and 200kA when coordinated with Class L current limiting fuses. See ASCO Pub. 1128 for suitable breakers and additional information. **IMPORTANT: FOR SERIES RATING BREAKERS MUST BE COORDINATED.**
- 6) For dimensions and additional information, see ASCO Outline Drawing 1001394-009 (NEMA 3R Secure Enclosure).

Casitas.

Transfer Switch Details

#1	ATS	AMPS: 0800	QTY: 1
Product	: Series 300	Catalog Number	: H03ATSA30800NGXM
Service Voltage / Hz	: 480V/60Hz	Optional Accessories	: 11BE, 18RX, 44G 125A Activate 31Z
Bypass Isolation	: Not Applicable	Product Description	: 300 Series, Automatic Open Transition Transfer Switch
No. of Switched Poles:	3	Neutral Configuration	: Solid [A]
Withstand Rating:	: See WCR Table Below	No. of Cables & Lug Size	: 4, 1/0 AWG to 600 MCM
Frame = H ₁ Switch Rating = 0800, Series = 300		Service	: Three Phase, 4-wire
Enclosure	: 3R(M)-UL Type 3R secure double door enclosure (See Disclaimer 3)	Markings	:
Extended Warranty	: Not Included		

ACCESSORY DESCRIPTIONS	
#	Description
1	Adds the following features to the Group G controller: (1) Serial RS-485 Modbus Communications (2) Multi-Schedule Engine Exerciser (3) a 300 Entry Event Log and (4) a common alarm output function. When applied on 3-phase systems it also enables: (1) 3-Phase Emergency Source VLL sensing (2) Phase Rotation Monitoring (3) Emergency Source VLL Unbalance Monitoring.
2	REX (Relay Expansion Module) with Normal and Emergency available output contacts (18B & 18G)
3	Load disconnect contacts, with TD which operate before/after transfer
4	Strip heater w/ thermostat, wired to load terminals: 208-600 volts
5	Seismic

TS OPERATOR CIRCUIT

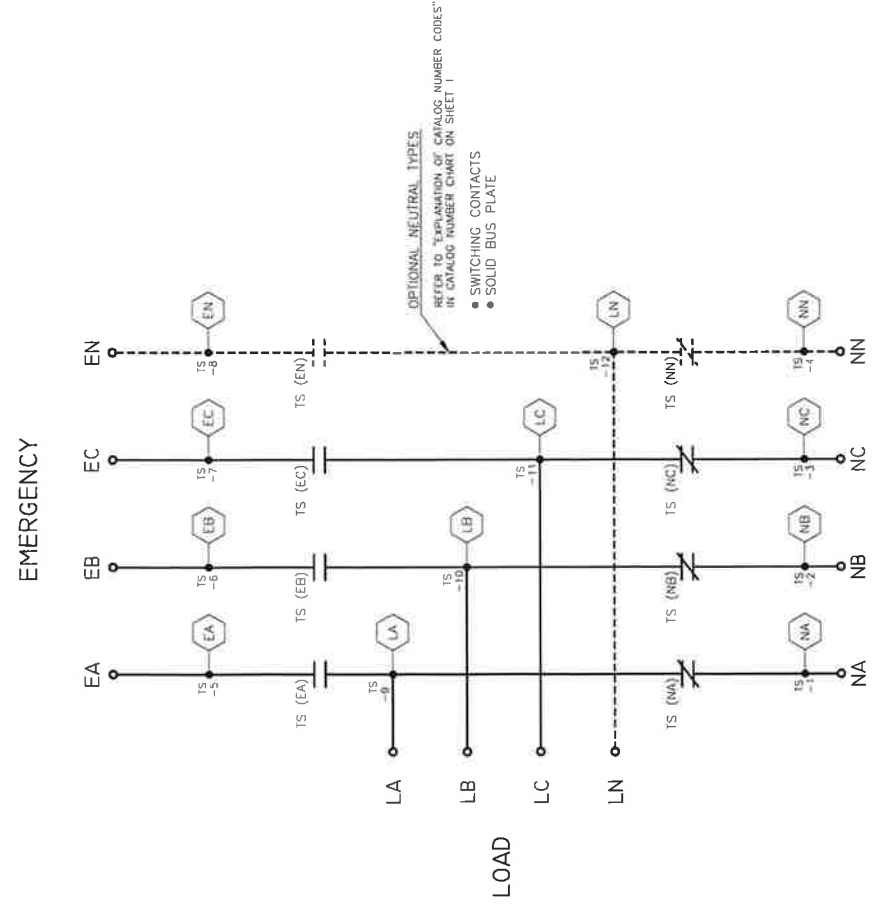
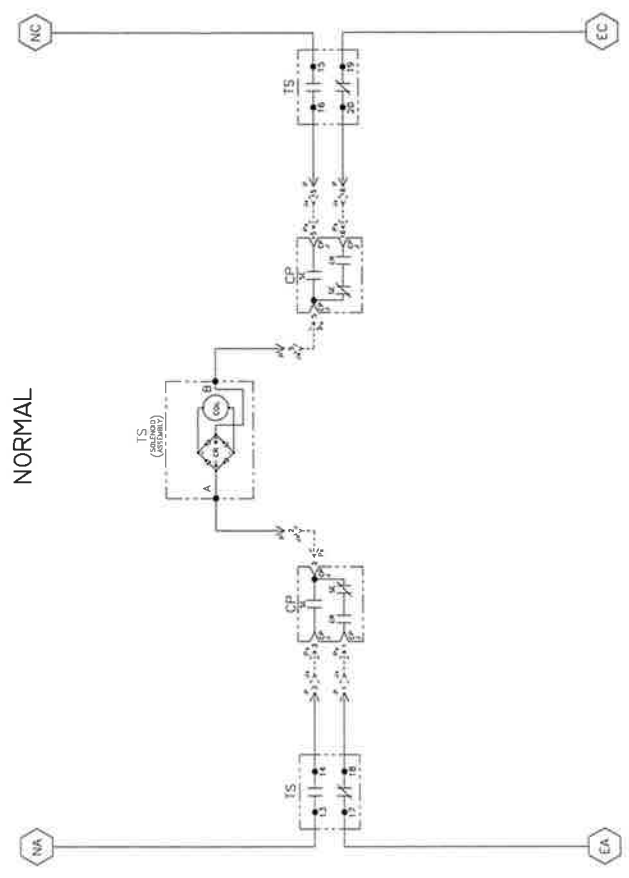
MAIN POWER POLES

NORMAL

EMERGENCY

EMERGENCY

NORMAL



NOTE:
ATS/NTS SHOWN CLOSED ON NORMAL SOURCE.

TS	GENERAL CONTACTS	300 SERIES	300 SERIES
13-14	NO (NORMAL POSITION)	300-13	300-14
15-16	NO (NORMAL POSITION)	300-15	300-16
17-18	NO (NORMAL POSITION)	300-17	300-18
19-20	NO (NORMAL POSITION)	300-19	300-20

TERMINAL	DESCRIPTION	WIRING
A	300 SERIES (CONTACTS) 300-13	300-13
B	300 SERIES (CONTACTS) 300-14	300-14
C	300 SERIES (CONTACTS) 300-15	300-15
D	300 SERIES (CONTACTS) 300-16	300-16
E	300 SERIES (CONTACTS) 300-17	300-17
F	300 SERIES (CONTACTS) 300-18	300-18
G	300 SERIES (CONTACTS) 300-19	300-19

TERMINAL	DESCRIPTION	WIRING
15	300 SERIES (CONTACTS) 300-15	300-15
16	300 SERIES (CONTACTS) 300-16	300-16
17	300 SERIES (CONTACTS) 300-17	300-17
18	300 SERIES (CONTACTS) 300-18	300-18
19	300 SERIES (CONTACTS) 300-19	300-19

TERMINAL	DESCRIPTION	WIRING
15	300 SERIES (CONTACTS) 300-15	300-15
16	300 SERIES (CONTACTS) 300-16	300-16
17	300 SERIES (CONTACTS) 300-17	300-17
18	300 SERIES (CONTACTS) 300-18	300-18
19	300 SERIES (CONTACTS) 300-19	300-19

TERMINAL	DESCRIPTION	WIRING
15	300 SERIES (CONTACTS) 300-15	300-15
16	300 SERIES (CONTACTS) 300-16	300-16
17	300 SERIES (CONTACTS) 300-17	300-17
18	300 SERIES (CONTACTS) 300-18	300-18
19	300 SERIES (CONTACTS) 300-19	300-19

TERMINAL	DESCRIPTION	WIRING
15	300 SERIES (CONTACTS) 300-15	300-15
16	300 SERIES (CONTACTS) 300-16	300-16
17	300 SERIES (CONTACTS) 300-17	300-17
18	300 SERIES (CONTACTS) 300-18	300-18
19	300 SERIES (CONTACTS) 300-19	300-19

TERMINAL	DESCRIPTION	WIRING
15	300 SERIES (CONTACTS) 300-15	300-15
16	300 SERIES (CONTACTS) 300-16	300-16
17	300 SERIES (CONTACTS) 300-17	300-17
18	300 SERIES (CONTACTS) 300-18	300-18
19	300 SERIES (CONTACTS) 300-19	300-19

TERMINAL	DESCRIPTION	WIRING
15	300 SERIES (CONTACTS) 300-15	300-15
16	300 SERIES (CONTACTS) 300-16	300-16
17	300 SERIES (CONTACTS) 300-17	300-17
18	300 SERIES (CONTACTS) 300-18	300-18
19	300 SERIES (CONTACTS) 300-19	300-19

TERMINAL	DESCRIPTION	WIRING
15	300 SERIES (CONTACTS) 300-15	300-15
16	300 SERIES (CONTACTS) 300-16	300-16
17	300 SERIES (CONTACTS) 300-17	300-17
18	300 SERIES (CONTACTS) 300-18	300-18
19	300 SERIES (CONTACTS) 300-19	300-19

TERMINAL	DESCRIPTION	WIRING
15	300 SERIES (CONTACTS) 300-15	300-15
16	300 SERIES (CONTACTS) 300-16	300-16
17	300 SERIES (CONTACTS) 300-17	300-17
18	300 SERIES (CONTACTS) 300-18	300-18
19	300 SERIES (CONTACTS) 300-19	300-19

TERMINAL	DESCRIPTION	WIRING
15	300 SERIES (CONTACTS) 300-15	300-15
16	300 SERIES (CONTACTS) 300-16	300-16
17	300 SERIES (CONTACTS) 300-17	300-17
18	300 SERIES (CONTACTS) 300-18	300-18
19	300 SERIES (CONTACTS) 300-19	300-19

TERMINAL	DESCRIPTION	WIRING
15	300 SERIES (CONTACTS) 300-15	300-15
16	300 SERIES (CONTACTS) 300-16	300-16
17	300 SERIES (CONTACTS) 300-17	300-17
18	300 SERIES (CONTACTS) 300-18	300-18
19	300 SERIES (CONTACTS) 300-19	300-19

TERMINAL	DESCRIPTION	WIRING
15	300 SERIES (CONTACTS) 300-15	300-15
16	300 SERIES (CONTACTS) 300-16	300-16
17	300 SERIES (CONTACTS) 300-17	300-17
18	300 SERIES (CONTACTS) 300-18	300-18
19	300 SERIES (CONTACTS) 300-19	300-19

EQUIPMENT STORAGE REQUIREMENTS

Equipment provided by Schneider-Electric and/or ASCO Power Technologies that is stored for a short-term duration (i.e., days to weeks) or long-term duration (i.e., months to years), must be kept in a cool, dry, temperature-controlled environment. Storage of equipment in open warehouses, locations without proper temperature and humidity control, and/or outdoor storage is not acceptable without the utilization of heating elements, thermostats, humidistats, and protection from weather and dirt. Failure to comply may result in moisture ingress and/or condensation to form resulting in rusting and or corrosion, component and/or equipment failure and replacement, and/or nullification of any manufacturer warranty.

For **General Instructions for Proper Handling, Installation, Operation, and Maintenance of Deadfront Distribution Switchboards Rated 600 Volts or Less**, refer to [ANSI NEMA PB 2.1-2013](#)

Copies of the following documents should be included on the submittals, depending on the units that are on the proposal:

For ASCO Power Technology's **Switchgear and Switchboards**, refer to Instruction Bulletin **381333-353**.

For Schneider-Electric/Square D's **Power Zone 4 (PZ4) Switchgear**, refer to Instruction Bulletin **80298-002-09**.

For Schneider-Electric/Square D's **Power Zone 4 (PZ4) NEMA 3R Walk-In Switchgear**, refer to Instruction Bulletin **80298-156-02**.

For Schneider-Electric/Square D's **Quality, Efficient, Delivery™ (QED2) Switchboard**, refer to Instruction Bulletin **80043-055-14**.

For Schneider-Electric/Square D's **Masterclad Metal-Clad Indoor Switchgear**, refer to Instruction Bulletin **6055-30**.

Limited Warranty

Series 150, 200, 300 and 4000 Power Transfer Switches

This Warranty is given ONLY to purchasers who buy for commercial or industrial use in the ordinary course of each purchaser's business.

General

ASCO Power Technologies, LP products and systems are in our opinion the finest available. We take pride in our products and are pleased that you have chosen them. Under certain circumstances we offer with our products the following Limited Guardian Warranty Against Defects in Material and Workmanship.

Please read your Guardian Warranty carefully. This Warranty sets forth our responsibilities in the unlikely event of defect and tells you how to obtain performance under this Warranty.

Limited Warranty Against Defects in Material and Workmanship:

Product Description	Series	Category Code
Automatic Transfer Switch	150, 200	1ATS, 2ATS
	300	3ATS, 3ADTS
	4000	4ATS, 4ADTS, 4ACTS
Non-Automatic Transfer Switch (Electrically Operated)	300	3NTS, 3NDTS
ASCO Lighting Control Panels	4000	4NTS, 4NDTS, 4NCTS
Manual Transfer Switch	300	3MTS, 3MTQ, 3MUQ, 3MPQ, 3MGQ, 3MGDQ, 3MTDQ
Service Entrance Transfer Switch (SEATS)	300	3AUS, 3ADUS, 3APS, 3ARS, 3MUS
Power Transfer Load Center (PTLC)	300	300L
Quick Connect Panels	300	3OCN, 3OCU, 3QCD
Electrically Operated Bypass Switch	4000	4ATE, 4NTE, 4ADTE, 4NDTE

Limited Warranty

ASCO warrants that the ATS will be free from defects in material and workmanship and will conform to ASCO's standard specifications for the ATS for a period of twenty four (24) months from date of product shipment from ASCO (the "Warranty Period"). This Limited Warranty does not extend to subsequent owners of the structure during the Warranty period.

Terms of Warranty

The foregoing Limited Warranty is conditioned upon user's compliance with the following:

1. The ASCO Power Transfer Switch is installed in accordance with ASCO specifications and state and local codes and standards by an electrician licensed in the state of installation.
2. The ASCO Power Transfer Switch is maintained in accordance with ASCO instructions and used under normal conditions for the purposes intended by ASCO.

All warranty field-related repairs, replacements or adjustments must be made by ASCO Services Inc. or its duly authorized representative.

Optional Available Extended Warranty

Optional extended warranty coverage may be purchased from ASCO for a specified fee at the time of the original sale. If purchased, Warranty period shall be extended up to an additional thirty - six (36) months beyond the standard twenty - four (24) months to provide up to five (5) year coverage applicable to the above referenced products, except for 3AUS, 3APS, and 3ARS products where the warranty period for the circuit breaker shall be limited to 24 months from date of shipment from ASCO. The length of optional extended coverage shall be reflected on the ASCO invoice and/or order acknowledgement document.

Warranty Extends To First Purchaser for Use, Non-Transferable

This Warranty is extended to the first person, firm, association, or corporation for whom the ASCO product specified herein is originally installed for use (the "user") in the fifty United States or Canada. This Warranty is not transferable or assignable without the prior written permission of ASCO.

Assignment of Warranties

ASCO assigns to user any warranties which are made by manufacturers and suppliers of components of, or accessories to, the ASCO product and which are assignable, but ASCO makes no representations as to the effectiveness or extent of such warranties, assumes no responsibility for any matters which may be warranted by such manufacturers or suppliers and extends no coverage under this Warranty to such components or accessories.

Drawings, Descriptions

ASCO warrants for the period and on the terms of the Warranty set forth herein that the ASCO product will conform to the descriptions contained in the certified drawings, if any, applicable thereto, to ASCO's final invoices, and to applicable ASCO product brochures and manuals current as of the date of product shipment ("descriptions"). ASCO does not control the use of any ASCO product. Accordingly, it is understood that the descriptions are not Warranties of performance and not Warranties of fitness for a particular purpose.

Warranty Claims Procedure

Within a reasonable time, but in no case to exceed thirty (30) days, after user's discovery of a defect, user shall contact ascopowerwarranty@ascopower.com. Subject to the limitations specified herein, an ASCO Services field service representative will repair the non-conforming ASCO product warranted hereunder, without charge for parts, labor, or travel expenses. Warranty coverage will apply only after ASCO's inspection discloses the claimed defect and shows no signs of treatment or use that would void the coverage of this Warranty. All defective products and component parts replaced under this Warranty become the property of ASCO.

Warranty Performance of Component Manufacturers

It is ASCO's practice, consistent with its desire to remedy Warranty defects in the most prompt and effective manner possible, to cooperate with and utilize the services of component manufacturers and their authorized representatives in the performance of work to correct defects in the product components. Accordingly, ASCO may utilize third parties in the performance of Warranty work, including repair or replacement hereunder, where, in ASCO's opinion, such work can be performed in less time, with less expense, or in closer proximity to the ASCO product.

Items Not Covered By Warranty

This Warranty does not cover damage or defect caused by misuse, improper application, wrong or inadequate electrical current or connection, negligence, inappropriate on site operating conditions, repair by non-ASCO designated personnel, accident in transit, tampering, alterations, a change in location or operating use, exposure to the elements, water, or other corrosive liquids or gases, acts of God, theft or installation contrary to ASCO's recommendations or specifications, or in any event if the ASCO serial number has been altered, defaced, or removed.

This Warranty does not cover shipping costs, installation costs, external circuit breaker resetting or maintenance or service items and further, except as may be provided herein, does not include labor costs or transportation charges arising from the replacement of the ASCO product or any part thereof or charges to remove or reinstall same at any premises of user.

Repair or replacement of a defective product or part thereof does not extend the original Warranty period.

The products listed in this Warranty are not for use in the control area or any reactor connected or safety applications or within the containment area of a nuclear facility or for integration into medical devices.

Limitations

This Warranty is in lieu of and excludes all other Warranties, express or implied, including merchantability and fitness for a particular purpose.

User's sole and exclusive remedy is repair or replacement of the ASCO product as set forth herein.

If user's remedy is deemed to fail of its essential purpose by a court of competent jurisdiction, ASCO's responsibility for property loss or damage shall not exceed the net product purchase price.

In no event shall ASCO assume any liability for indirect, special, incidental, consequential or exemplary damages of any kind whatsoever, including without limitation lost profits, business interruption or loss of data, whether any claim is based upon theories of contract, negligence, strict liability, tort, or otherwise.

Miscellaneous

No salesperson, employee, or agent of ASCO is authorized to add to or vary the terms of this Warranty. Warranty terms may be modified, if at all, only in writing signed by an ASCO officer.

ASCO obligations under this Warranty are conditioned upon ASCO timely receipt of full payment of the product purchase price and any other amounts due. ASCO reserves the right to supplement or change the terms of this Warranty in any subsequent warranty offering to user or others.

In the event that any provision of this Warranty should be or becomes invalid and/or unenforceable during the Warranty period, the remaining terms and provisions shall continue in full force and effect.

This Warranty shall be governed by, and construed under, the laws of the State of New Jersey, without reference to the conflict of laws principles thereof.

This Warranty represents the entire agreement between ASCO and user with respect to the subject matter herein and supersedes all prior or contemporaneous oral or written communications, representations, understandings, or agreements relating to this subject.



Flexible Power Transfer Solutions for Commercial & Industrial Applications

ASCO Power
Technologies™

ASCO SERIES 300
Power Transfer Switches



ascopower.com

Life Is On

Schneider
Electric

ASCO SERIES 300 Automatic Transfer Switches

Power outages impact small and large facilities alike. ASCO SERIES 300 Automatic Transfer Switches offer rugged design and reliable performance to small and mid-size commercial and industrial facilities in packaged solutions that are easy to select, procure, install, and operate.

Every SERIES 300 generator transfer switch is engineered with ASCO's reliability expertise in a package that makes backup power accessible for small and mid-size facilities. Leveraging knowledge derived from a century of critical power transfer experience, each SERIES 300 is backed by the same ASCO technical support and service that solves the most demanding critical power challenges facing facilities today.

Product Details

Transfer Switch Overview

SERIES 300 Automatic Transfer Switches

Designed to Fit Anywhere

The ASCO SERIES 300 product line provides the most compact design of generator power transfer switches in the industry.

Available to mount on walls or floors, all models through 2000 amperes are designed to be completely front-accessible. This permits installation flush against walls while allowing installation of cabling and connections from the front of the switch. Cable entrance plates are standard on 1600 and 2000 ampere units; these allow use of optional side-mounted pull boxes for additional cable bending space.

- 30 through 3000 amperes in compact designs
- Up to 600 VAC, single or three phase
- Listed to UL 1008 - Standard for Safety - Transfer Switch Equipment
- True double-throw operation: The single solenoid design is inherently interlocked to prevent simultaneous connections of two power sources.
- Will not transfer to a dead source - single solenoid operator derives power from the destination source
- Easy-to-navigate 128x64 graphical LCD display with keypad provides LED indicators for switch position, source availability, not-in-auto mode, and alert conditions.
- Integrated, multilingual, user interface for configuration and monitoring
- Available Delayed Transition operation
- Optional Relay Expansion Module with extra relays for accessory outputs
- Soft keys for test function and time delay bypass
- Emergency source failure alert indication
- Optional Historical Event Log
- Displays statistical ATS monitoring information
- Built-in diagnostic functions
- Password protection to prevent unauthorized actions
- Adjustable delay feature prevents nuisance transfer due to momentary utility power outages and generator dips
- Auxiliary contacts signal position of main contacts - two for normal and two for emergency position
- Standard solid neutral terminals
- Restriction of Hazardous Substances (RoHS) compliant controller
- Standard 2 year warranty. Optional 1, 2, and 3 year extensions

Power Knowledge

Basic Automatic Transfer Switch Functions



ASCO's SERIES 300 lineup offers flexible backup power solutions for businesses of every size.



SERIES 300 Power Transfer Switch rated 200 amps

SERIES 300 Automatic Switching Solutions

Automatic and Non-Automatic Transfer Switching

ASCO Transfer Switches are available in both automatic and non-automatic types. Both are electrically operated. For automatic transfer switches, the controller initiates transfer between power sources. For non-automatic transfer switches, a user initiates transfer using local or remote controls.

SERIES 300 non-automatic transfer switches offer the following features.

- Models range from 30 through 3000 amperes, up to 600V
- Controller prevents inadvertent operation under low voltage conditions
- Source acceptability lights inform operator when sources are available to accept load
- Standard in-phase monitor for transferring motor loads between live sources

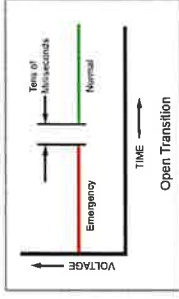
Power Knowledge

Non-Automatic and Manual Transfer Switches for Backup Power Applications

Open Transition Transfer Switching

ASCO Transfer Switches are available with a standard, 2-position, open transition models that reliably transfer loads in less than 100 milliseconds. Open transition switches are suitable for a wide range of applications.

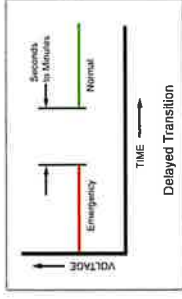
- 30 to 3000 amps
- Single-operator switching mechanism prevents simultaneous connection of both sources
- Available In-Phase Monitor can be activated for transferring motor loads



Delayed Transition Transfer Switching

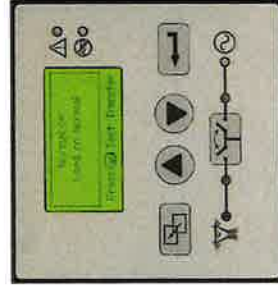
ASCO Delayed Transition Transfer Switches transfer loads between power sources using a limited load disconnect position with an adjustable delay.

- 150 through 3000 amps
- Reliable, field-proven, dual-solenoid operating mechanism
- Mechanical interlocks to prevent simultaneous connection of both power sources
- Adjustable delay for load disconnect - 0 to 5 minutes
- Non-automatic models available in manual operation configuration
- Automatic models available with load shed feature



SERIES 300 Group G Controller

The SERIES 300 Group G Controller is reliable and field-proven. It provides all of the voltage, frequency, control, timing, and diagnostic functions required for most emergency and standby power applications.



- Touch pad programming
- Displays active limiters
- On-board diagnostics
- Password protection
- Voltage and frequency sensing
- Status and control functions

Power Knowledge

Transition Mode Basics

- Transferring Motor Loads between Power Sources
- Transferring Loads with Zero Power Interruption

Product Details

Group G Controller



Transfer Switch Communications and Metering

Options to Customize Functionality and Increase Value

Product Details

5300 SERIES Annunciators

Remote Annunciation
Monitor Power Equipment Status from Anywhere

Monitoring and control transfer switches from across the room, building, or from Internet.
 5310 — LED annunciator — Single ATS
 5350 — LED annunciator — up to 8 ATSs

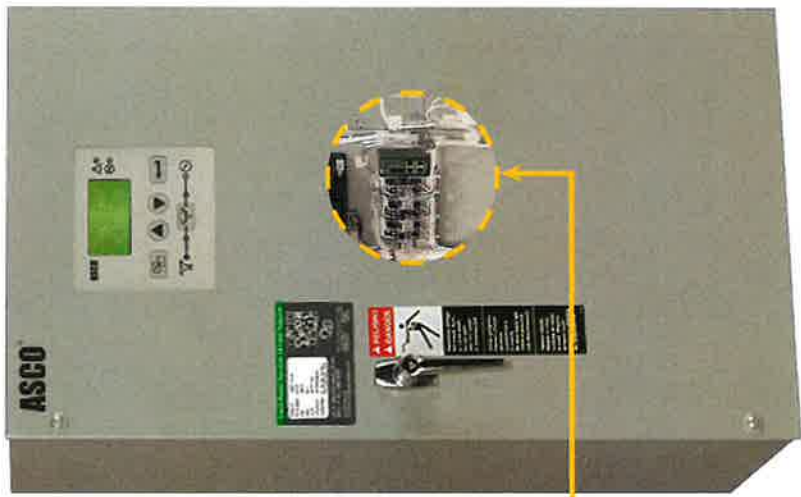


Product Details

5210 Power Meter

Metering
Transfer Switches are the Perfect Place to Monitor Power Flow, Power Conditions, and Power Events

5210 Power Meter — Provides deeper insight into circuit status and conditions.



Product Details

5140 Connectivity Module

Communication
Turn Transfer Switches into Power Information Portals

5140 Connectivity Module — Makes status and power information from a single switch available to via ModBUS, SNMP, and web pages.



SERIES 300 Manual Transfer Switching and Quick Connection Solutions

ASCO SERIES 300 Manual Transfer Switching and Quick Connection Solutions offer reliable service and application flexibility for a wide range of facilities.

Manual Transfer Switches



- Three-position, easy-to-use center-off switch
- Compact design - easy to install and maintain
- Designed to handle demands of motors and inrush currents

Power Knowledge

Differences Between Manual, Non-Automatic, & Automatic Transfer Switches

Product Details

SERIES 300 Manual Transfer Switch

Quick Connect Panels



- Listed to UL 1008 Transfer Switch Accessory standard
- Utilizes standard Cam-Lok™ receptacles for quick connections
- Standard Type 3R construction is weatherproof with or without cable
- Utilizes standard Series 16 Single Pole quick connect receptacles

Power Knowledge

NEC Requirement for Permanent Manual Switching Means

Product Details

SERIES 300 Quick Connect Power Panel

Manual Transfer Switches with Quick Connects



- The ASCO SERIES 300 Manual Transfer Switch with Integrated Quick Connects provides a total temporary power connection and transfer solution
- Enables connection and control of a temporary or portable generator
- Provides a complete UL 1008-listed solution in a single unit

Product Details

SERIES 300 Manual Transfer Switch with Quick Connects

Dual-Purpose Manual Transfer Switches with Quick Connects



- Provides both supplemental backup power and load testing connectivity through a single device.
- Listed by ETL to UL 891
- Utilizes standard Series 16 Single Pole quick connect receptacles

Product Details

SERIES 300 Dual Purpose Quick Connect Power Panel